

1

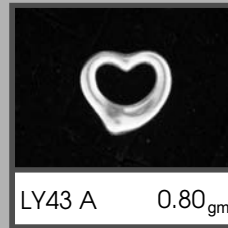
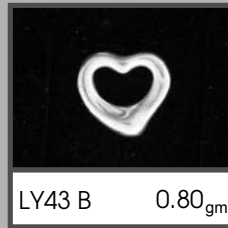
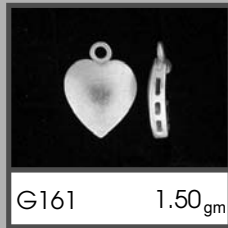
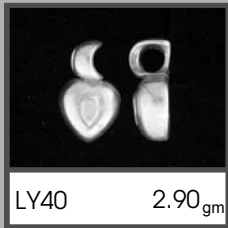
2

3

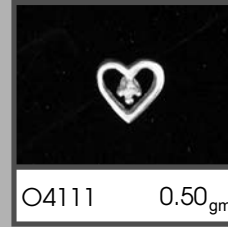
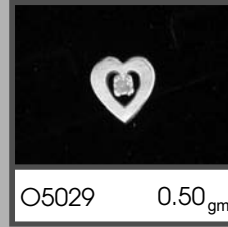
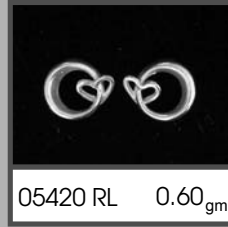
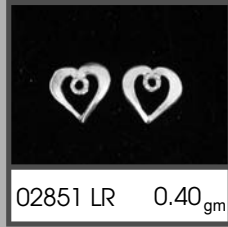
4

5

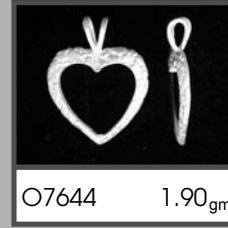
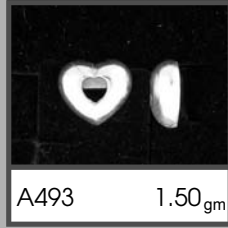
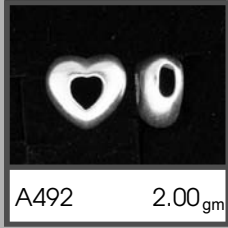
A



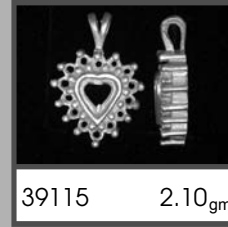
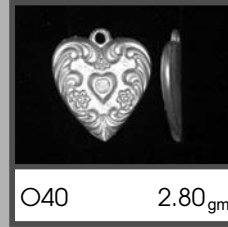
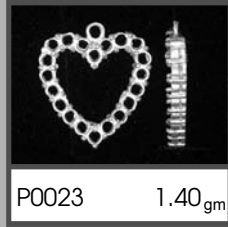
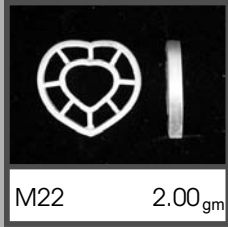
B



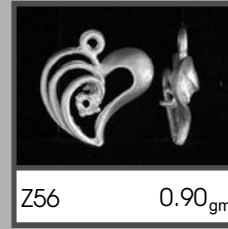
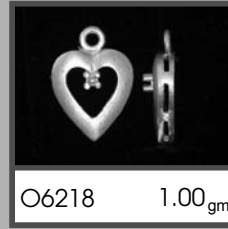
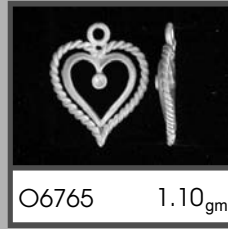
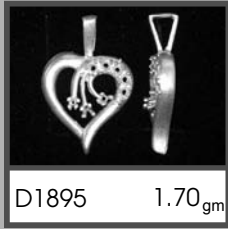
C



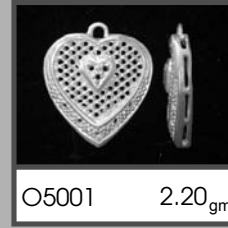
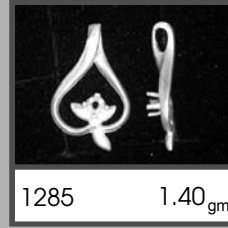
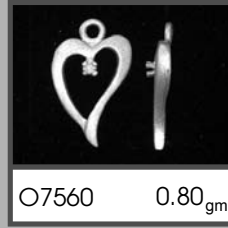
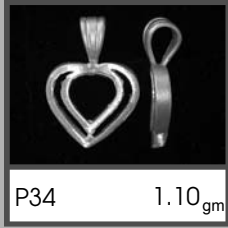
D



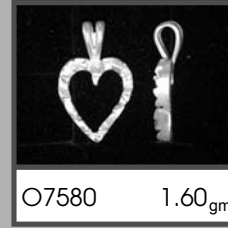
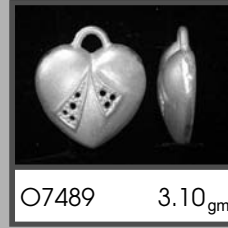
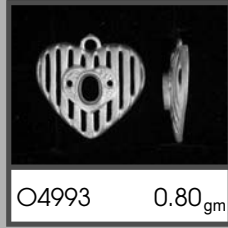
E



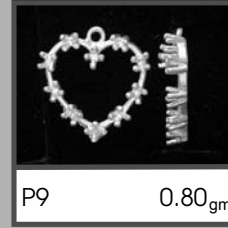
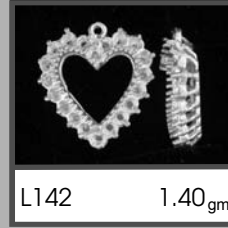
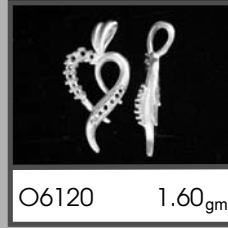
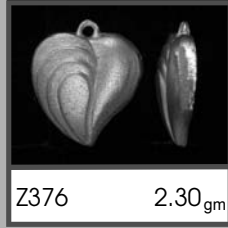
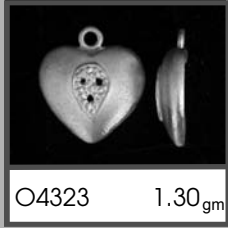
F



G



H



	1	2	3	4	5
A	 O7578 1.50 <sub>gm</sub>	 O6458 0.90 <sub>gm</sub>	 1103 1.10 <sub>gm</sub>	 O6651 0.70 <sub>gm</sub>	 O3171 0.80 <sub>gm</sub>
B	 875 1.70 <sub>gm</sub>	 ER52 1.70 <sub>gm</sub>	 X30 1.00 <sub>gm</sub>	 O2871 0.80 <sub>gm</sub>	 O3278 0.80 <sub>gm</sub>
C	 O6473 0.80 <sub>gm</sub>	 O6216 1.30 <sub>gm</sub>	 X31 1.20 <sub>gm</sub>	 742 2.00 <sub>gm</sub>	 99284 0.80 <sub>gm</sub>
D	 O6204 0.60 <sub>gm</sub>	 X122 0.70 <sub>gm</sub>	 O7226 0.90 <sub>gm</sub>	 O6393 0.50 <sub>gm</sub>	 O1266 1.10 <sub>gm</sub>
E	 OOO42 0.80 <sub>gm</sub>	 Z57 0.90 <sub>gm</sub>	 O5284 0.70 <sub>gm</sub>	 O6457 0.70 <sub>gm</sub>	 O6191 0.60 <sub>gm</sub>
F	 O1950 0.60 <sub>gm</sub>	 O3085 0.70 <sub>gm</sub>	 1806 0.80 <sub>gm</sub>	 O6539 0.80 <sub>gm</sub>	 O6192 0.70 <sub>gm</sub>
G	 O7283 0.80 <sub>gm</sub>	 O2368 0.70 <sub>gm</sub>	 1310 1.10 <sub>gm</sub>	 O6202 0.60 <sub>gm</sub>	 M115 2.60 <sub>gm</sub>
H	 11964 2.30 <sub>gm</sub>	 Z21 1.80 <sub>gm</sub>	 O6949 1.70 <sub>gm</sub>	 O6750 1.10 <sub>gm</sub>	 15424 1.40 <sub>gm</sub>



1

2

3

4

5

A



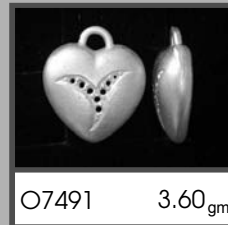
O6702 3.30<sub>gm</sub>



O7643 1.90<sub>gm</sub>



16870 2.60<sub>gm</sub>

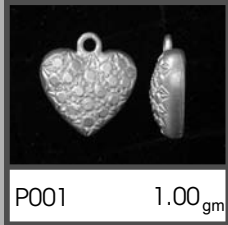


O7491 3.60<sub>gm</sub>

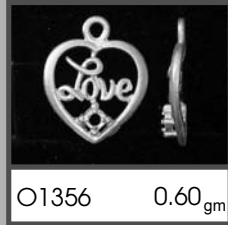


O7720 0.70<sub>gm</sub>

B



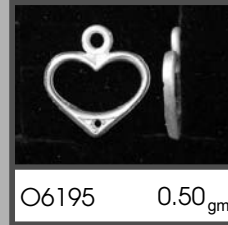
P001 1.00<sub>gm</sub>



O1356 0.60<sub>gm</sub>



O6649 0.90<sub>gm</sub>

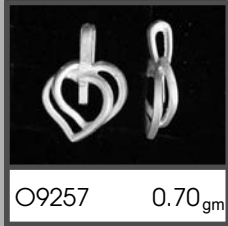


O6195 0.50<sub>gm</sub>

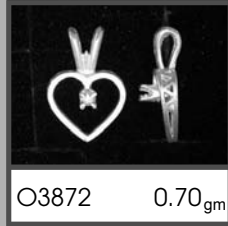


O6492 0.60<sub>gm</sub>

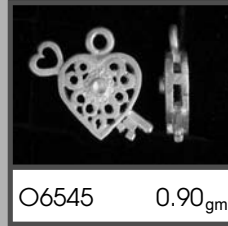
C



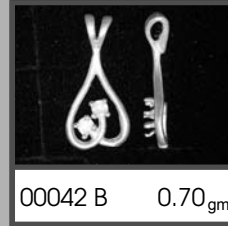
O9257 0.70<sub>gm</sub>



O3872 0.70<sub>gm</sub>



O6545 0.90<sub>gm</sub>

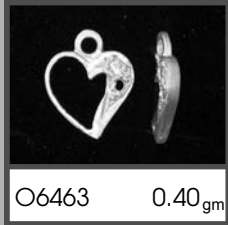


00042 B 0.70<sub>gm</sub>



O5031 0.60<sub>gm</sub>

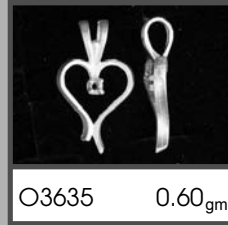
D



O6463 0.40<sub>gm</sub>



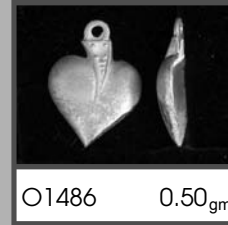
O6196 0.70<sub>gm</sub>



O3635 0.60<sub>gm</sub>

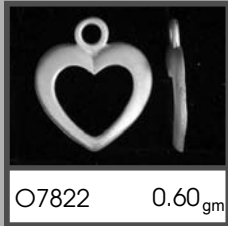


O2197 0.50<sub>gm</sub>

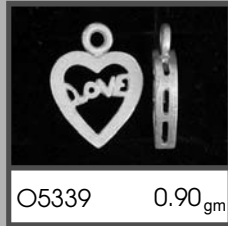


O1486 0.50<sub>gm</sub>

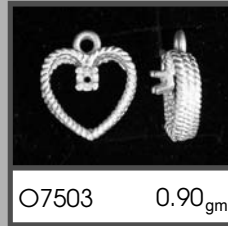
E



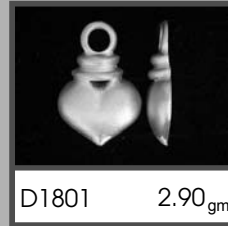
O7822 0.60<sub>gm</sub>



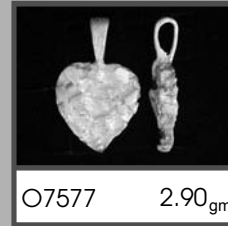
O5339 0.90<sub>gm</sub>



O7503 0.90<sub>gm</sub>

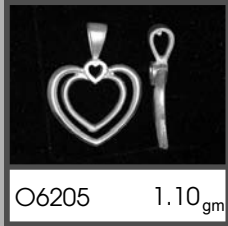


D1801 2.90<sub>gm</sub>



O7577 2.90<sub>gm</sub>

F



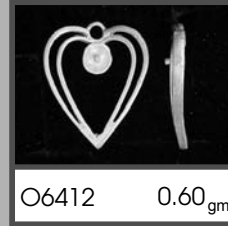
O6205 1.10<sub>gm</sub>



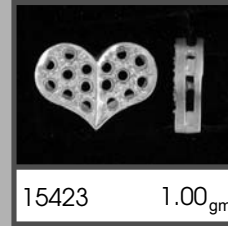
449 1.20<sub>gm</sub>



O3279 0.70<sub>gm</sub>

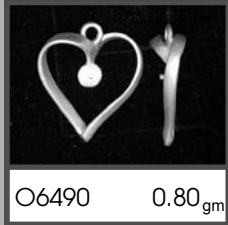


O6412 0.60<sub>gm</sub>

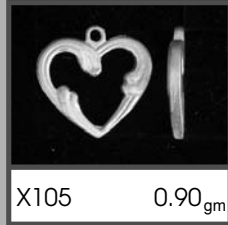


15423 1.00<sub>gm</sub>

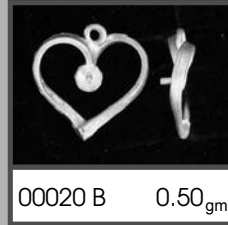
G



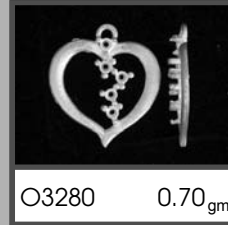
O6490 0.80<sub>gm</sub>



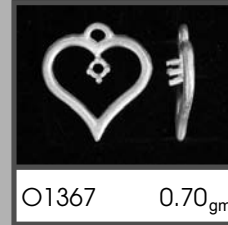
X105 0.90<sub>gm</sub>



00020 B 0.50<sub>gm</sub>

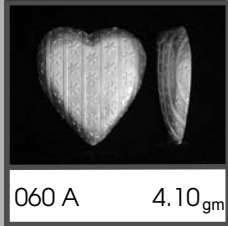


O3280 0.70<sub>gm</sub>



O1367 0.70<sub>gm</sub>

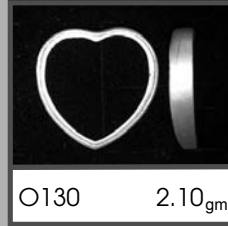
H



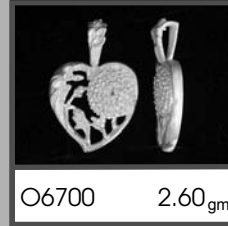
O60 A 4.10<sub>gm</sub>



O60 B 4.50<sub>gm</sub>



O130 2.10<sub>gm</sub>



O6700 2.60<sub>gm</sub>



O6690 2.30<sub>gm</sub>



CREATION | PRODUCTION | PERFECTION

1

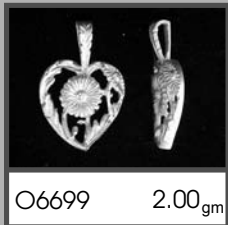
2

3

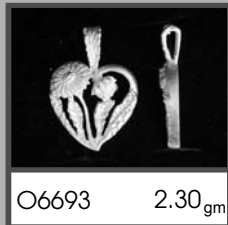
4

5

A



O6699 2.00<sub>gm</sub>



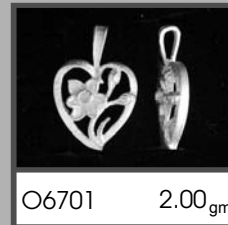
O6693 2.30<sub>gm</sub>



O6696 2.90<sub>gm</sub>

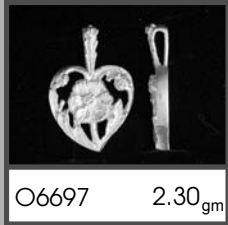


O6691 3.00<sub>gm</sub>

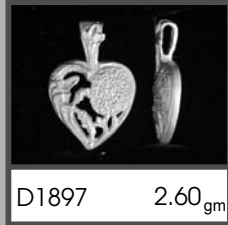


O6701 2.00<sub>gm</sub>

B



O6697 2.30<sub>gm</sub>



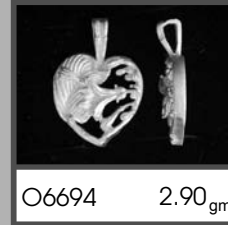
D1897 2.60<sub>gm</sub>



O6695 2.20<sub>gm</sub>

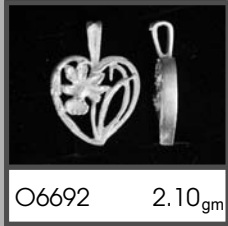


O6698 2.50<sub>gm</sub>

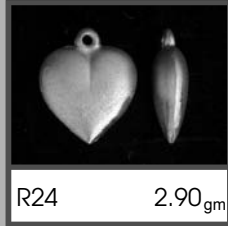


O6694 2.90<sub>gm</sub>

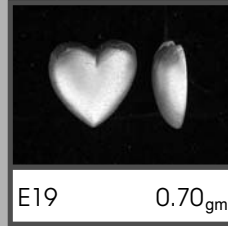
C



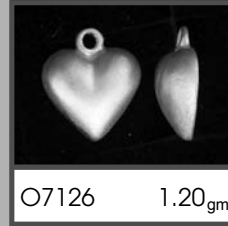
O6692 2.10<sub>gm</sub>



R24 2.90<sub>gm</sub>



E19 0.70<sub>gm</sub>

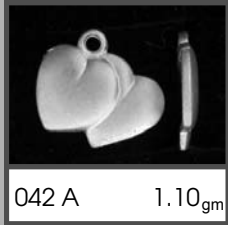


O7126 1.20<sub>gm</sub>

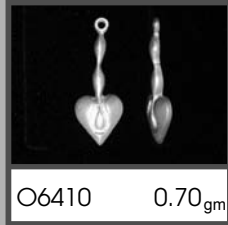


O2822 0.60<sub>gm</sub>

D



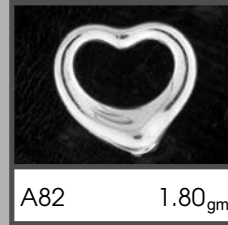
O42 A 1.10<sub>gm</sub>



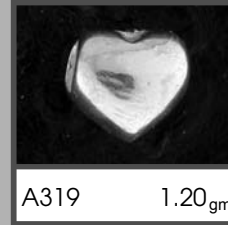
O6410 0.70<sub>gm</sub>



A357 3.10<sub>gm</sub>

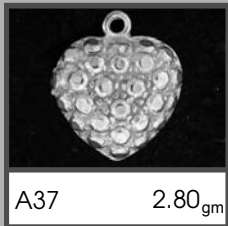


A82 1.80<sub>gm</sub>

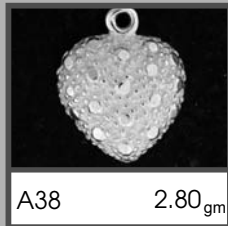


A319 1.20<sub>gm</sub>

E



A37 2.80<sub>gm</sub>



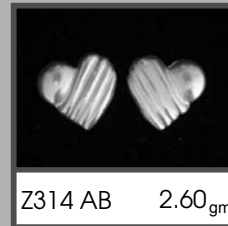
A38 2.80<sub>gm</sub>



A41 5.20<sub>gm</sub>



A332 0.30<sub>gm</sub>

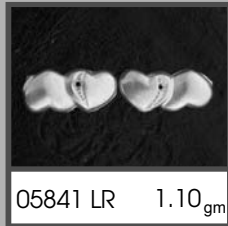


Z314 AB 2.60<sub>gm</sub>

F



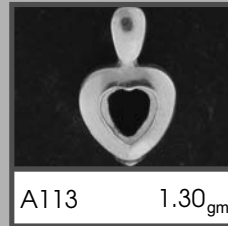
O5448 LR 0.30<sub>gm</sub>



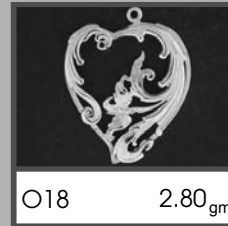
O5841 LR 1.10<sub>gm</sub>



A89 1.70<sub>gm</sub>

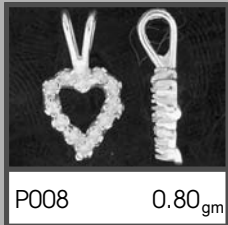


A113 1.30<sub>gm</sub>

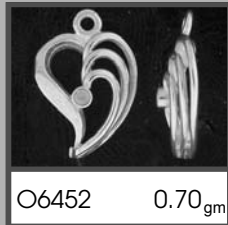


O18 2.80<sub>gm</sub>

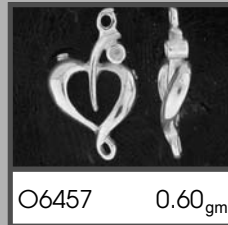
G



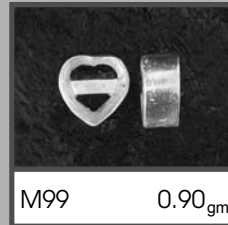
P008 0.80<sub>gm</sub>



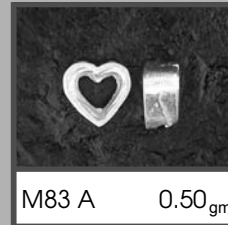
O6452 0.70<sub>gm</sub>



O6457 0.60<sub>gm</sub>



M99 0.90<sub>gm</sub>

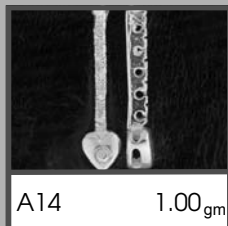


M83 A 0.50<sub>gm</sub>

H



EE37 LR 0.70<sub>gm</sub>



A14 1.00<sub>gm</sub>



O5449 LR 0.30<sub>gm</sub>



O3903 1.70<sub>gm</sub>



O6597 0.80<sub>gm</sub>



1

2

3

4

5

A



B

C

D

E

F

G

H

